

PART OF SECTIONS 11, 12, 13, & 14, T. 6 N., R. 3 E., S. L. B. & M.  
CAUSEY ESTATES SUBDIVISION NO. 3

96

TAXING UNIT: 58

LOTS 151-153  
IN WEBER COUNTY

PREFIX: 23-096

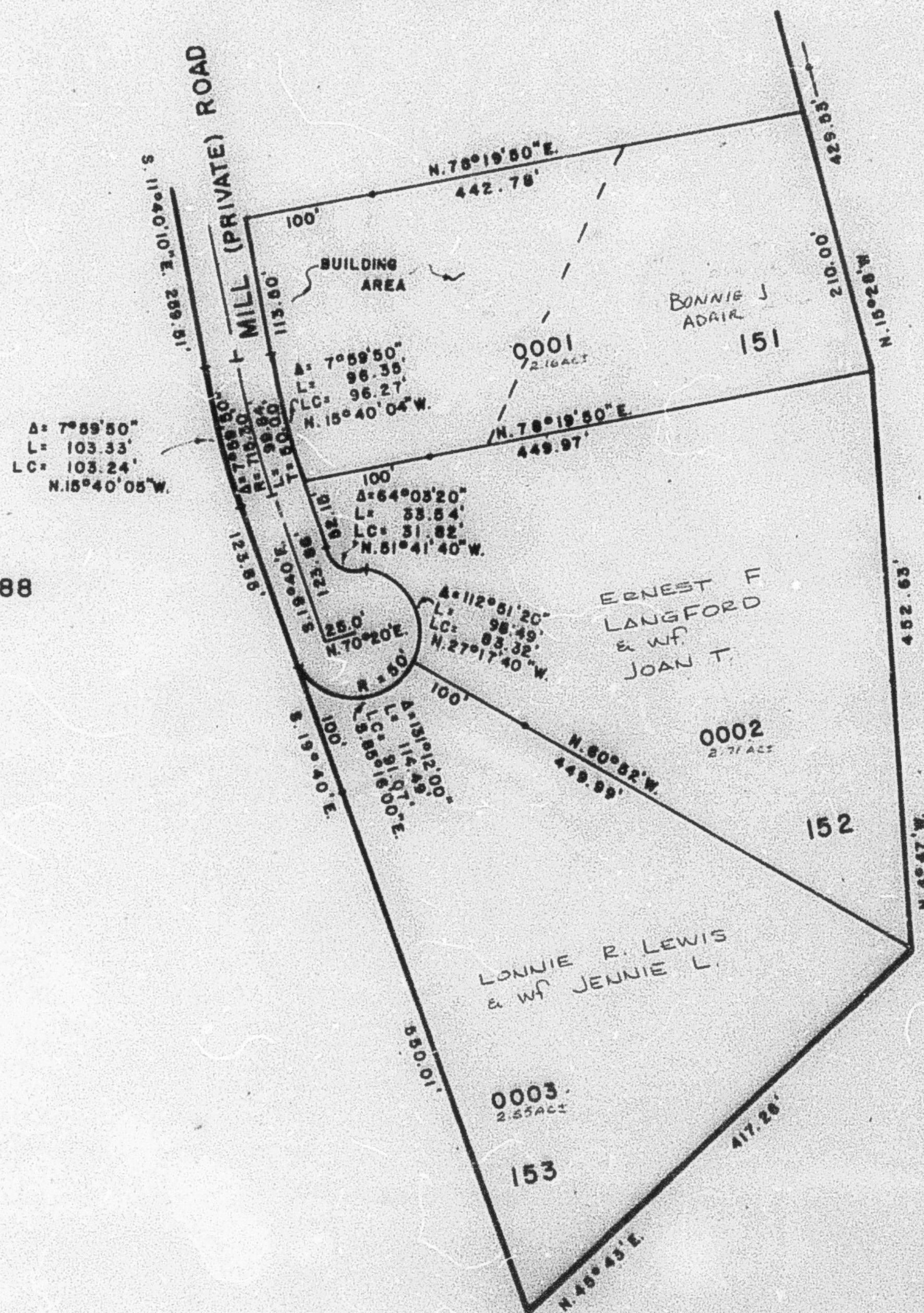
SCALE 1" = 100'

SEE PAGE 95

SEE PAGE 88

SEE PAGE 88

SEE PAGE 88



FOR COMPLETE ENG. DATA  
SEE ORIG. DEED. PLAT IN  
BOOK 24, PAGES 38, 39, 40.